

specifications

Wall mount enclosures shall be constructed of steel material. Enclosures shall provide cable bend radius protection. Enclosures offer optional discrete locking capability between installer and user segments.



NEW!

OPTICOM™ Wall Mount Enclosures

technical information

Dimensions:	FWME2:	WxHxD=12x10.18x2.32in. (304.8x258.6x59.1mm)
	FWME4:	WxHxD=16.11x12.25x3.52in. (409.2x311.0x89.4mm)
	FWME8:	WxHxD=16.11x20.25x3.52in. (409.2x514.2x89.4mm)
Splicing tray and holder capacity:	FWME2:	Holds (1) FSTHS which accommodates up to 2 FSTKs
	FWME4:	Holds (1) FST6H4 which accommodates up to 4 FST6s
	FWME8:	Holds (2) FST6H4s which accommodates up to 4 FST6s each
Packaging:	Includes accessory kit and labels	

key features and ... benefits

Improved strain relief clip	Easier to install and align fiber with grommet
Spooling area	Manages and organizes fiber slack
Rubber grommet	Offers dust/debris protection and helps secure cable to enclosure
Improved latch	Provides improved closure
Optional keyed lock	Provides added security
Works with all MINI-COM®, OPTI-JACK® ST, SC, Coax and Fiber Cassette modules	Offers flexibility for a variety of applications
Flush mounted latch	Minimizes box depth from wall
Optional splicing tray and holder	Allows splicing within patching enclosures

applications

PANDUIT® OPTICOM Wall Mount Enclosures are designed to manage and organize fiber distribution in areas where space is limited. They can also be used to manage cable from outside the facility. Enclosures can be used as an interconnect or cross-connect in any

telecommunications room and can use any standard FAP or FMP series adapter panel. OPTICOM Enclosures are completely modular and can manage both fiber and copper cables.

OPTICOM Wall Mount Enclosures

12/24 fiber (2 FAPs):	FWME2
24/48 fiber (4 FAPs):	FWME4
48/96 fiber (8 FAPs):	FWME8

Adapter Panels

6 FJ:	FMP6
Blank panel:	FAPB

ST Adapter Panels

6 ST:	FAP6WST
8 ST:	FAP8WST

SC Adapter Panels

6 simplex SC:	FAP6WBUSC
3 duplex SC:	FAP3WBUDSC
6 duplex SC:	FAP6WBUDSC

Splice Tray

FWME4, FWME8	
Splice tray:	FST6
Holder:	FST6H4
FWME2	
Splice tray:	FSTK
Holder:	FSTHS

Door Locks

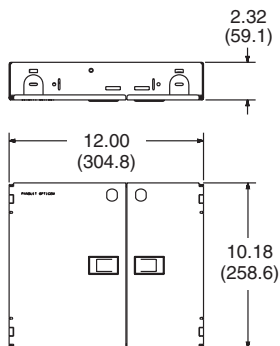
Door locks:	FELU (user side)
	FELS (service side)

installer tip

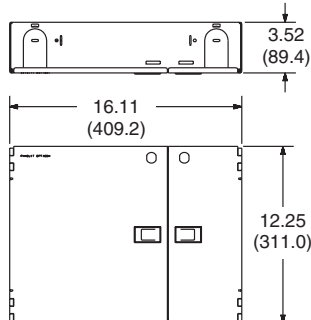
For added security, use optional locks FELU or FELS.

OPTICOM™ Wall Mount Enclosures

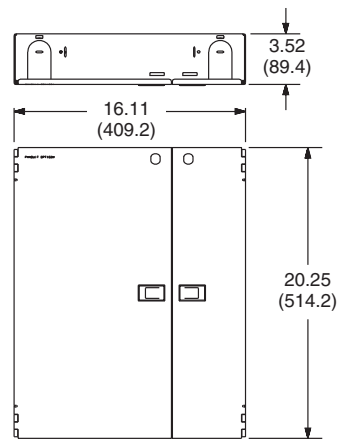
Wall Mount Enclosures



FWME2

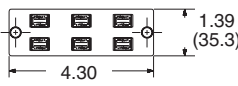
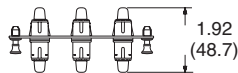


FWME4

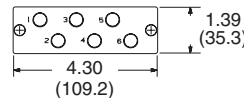


FWME8

Adapter Panels

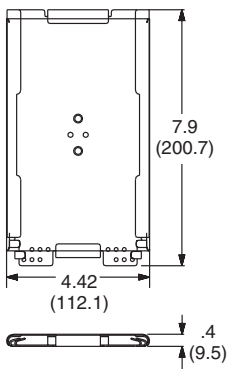


FAP6WBUSC

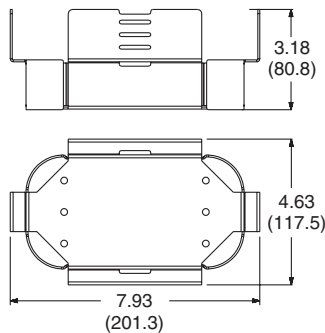


FAP6WST

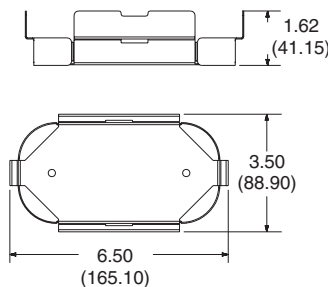
Splice Trays



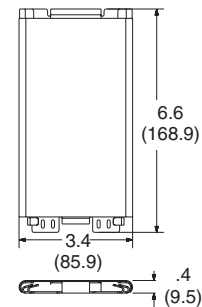
FST6



FST6H4



FSTHS



FSTK

Dimensions are in inches (Dimensions in parentheses are in millimeters)

Our products are warranted to be free from defects in material and workmanship at the time of sale but our obligation under this warranty is limited to the replacement of any product proved to be defective within 6 months (for product) or 90 days (for tools) from the date of delivery. Tool warranty is void if Panduit tools are modified, altered or misused in any way. Use of Panduit tooling with any product other than the specified Panduit products for which the tool was designed, constitutes misuse. Before using, user shall determine the suitability of the product for his intended use and user assumes all risk and liability whatsoever in connection therewith.

This warranty is made in lieu of and excludes all other warranties, expressed or implied, THE IMPLIED WARRANTIES OF MERCHANTABILITY AND FITNESS FOR A PARTICULAR USE ARE SPECIFICALLY EXCLUDED. Neither seller nor manufacturer shall be liable for any other injury, loss or damage whether direct or consequential, arising out of the use of, or the inability to use, the product.

The information contained in this literature is based on our experience to date and is believed to be reliable. It is intended as a guide for use by persons having technical skill at their own discretion and risk. We do not guarantee favorable results or assume any liability in connection with its use. Dimensions contained herein are for reference purposes only. For specific dimensional requirements consult the factory. This publication is not to be taken as a license to operate under, or a recommendation to infringe any existing patents. This supersedes and voids all previous literature, etc.



NETWORK CONNECTIVITY GROUP

WORLD HEADQUARTERS
PANDUIT CORP.
Tinley Park, Illinois, USA
Customer Service: 800-777-3300
Technical Support: 866-405-6654
Fax: 708-444-6993
Email: ncginfo@panduit.com
Internet: www.panduit.com/ncg

**For Pricing and Further Information —
Contact your local authorized
PANDUIT PAN-NET® Distributor or Sales Office**

PANDUIT CANADA
Markham, Ontario
Phone: 800-777-3300

PANDUIT EUROPE LTD.
London, UK
Phone: 44 208-601-7200

PANDUIT SINGAPORE PTE. LTD.
Republic of Singapore
Phone: (65) 6379 6700

PANDUIT JAPAN
Tokyo, Japan
Phone (81) (3) 3767-7011

PANDUIT LATIN AMERICA
Jalisco, Mexico
Phone: (52) 3 666-2501

PANDUIT AUSTRALIA PTY. LTD.
Victoria, Australia
Phone: (61) 3-9794 9020